

## Contents

1. Signs and symbols .....	14	8. Cleaning and storage .....	18
2. Getting to know your instrument.....	14	9. Replacement parts .....	21
3. Intended use.....	14	10. What if there are problems? .....	22
4. Safety notes.....	15	11. Technical data .....	22
5. Unit description .....	17	12. Replacement items .....	23
6. Initial use .....	17		
7. Operation.....	18		

## Dear Customer

Thank you for choosing one of our products. Our name stands for high-quality, thoroughly tested products for applications in the areas of heat, weight, blood pressure, body temperature, pulse, gentle therapy, massage, beauty, baby and air.

Please read these instructions for use carefully and keep them for later use, be sure to make them accessible to other users and observe the information they contain.

With kind regards

Your Beurer team

## Included in delivery

- Base unit for air humidifier
- Water tank for air humidifier
- 15 aroma pads
- 15 anti-lime pads
- Cleaning brush
- These instructions for use



## WARNING

- This device may be used by children over the age of eight and by people with reduced physical, sensory or mental skills or a lack of experience or knowledge, provided that they are supervised or have been instructed on how to use the device safely, and are fully aware of the consequent risks of use.
- Children must not play with the device.
- Cleaning and user maintenance must not be performed by children unless supervised.
- Disconnect the device from the mains supply during filling or cleaning.
- When the water evaporation is activated, the escaping steam is hot – risk of scalding.
- Do not use any solvent-based cleaning products.
- If the mains connection cable of this device is damaged, it must be disposed of. If it cannot be removed, the device must be disposed of.

# 1. Signs and symbols

The following symbols appear in the instructions for use and on the type plate:



## **WARNING**

Warning notice indicating a risk of injury or damage to health.



## **IMPORTANT**

Safety note indicating possible damage to the device/accessory or material damage,  
e.g. through escaping water.



## **Note**

Note on important information.

# 2. Getting to know your instrument

Humans spend a large proportion of their time indoors. For ideal ambient air, a humidity level of between 40% and 60% is recommended. This value is often not reached, particularly in winter, when cold, dry air enters living spaces that are being aired and is then warmed up.

This dry ambient air draws in moisture, drying out mucous membranes and skin, but also furniture.

Ambient air that is too dry has a number of negative effects:

- Mucous membranes and lips dry out
- Eyes become irritated
- Infections and respiratory diseases are more likely to occur
- Exhaustion, tiredness and difficulty concentrating
- Pets and plants are put under unnecessary strain
- Dust forms more quickly
- Electrostatic charging of textiles and synthetic fibres, such as carpets and plastic floor coverings
- Wooden furniture, and especially parquet floors, are damaged
- Musical instruments go out of tune

The LB 88 air humidifier:

- Works with the dual technology function for ultrasonic nebulisation and water evaporation
- Boasts high humidifying performance, max. 550 ml/hour
- Is suitable for rooms of up to 48 m<sup>2</sup>
- Humidifies the air particularly hygienically – bacteria can be killed by heating
- Is suitable for use with aromas
- Can be used with anti-lime pads depending on water hardness, to avoid heavy calcifications
- Makes little noise
- Switches off automatically if the water runs out
- Is easy to clean with a cleaning brush

# 3. Intended use

This air humidifier is intended for humidifying ambient air.

The device is intended for private use.



## **WARNING**

- If you suffer from a severe respiratory or lung disease, consult your doctor before using the air humidifier.
- The device is only intended for the purpose described in these instructions for use. The manufacturer is not liable for damage resulting from improper or careless use.

## 4. Safety notes

Read these instructions for use carefully. Non-observance of the following information may result in personal injury or material damage. Store these instructions for use and make them accessible to other users. Make sure you include these instructions for use when handing over the device to third parties.



### **WARNING**

Keep packaging material away from children! There is a choking hazard.

### **Electric shock**



### **WARNING**

As with every electrical device, use this air humidifier carefully and cautiously, in order to avoid hazards due to electric shock.

- Therefore, observe the following instructions for use:
  - Only use this device with the voltage specified on the device
  - Never use the device if it or its accessories show visible signs of damage
  - Do not use the device during a thunderstorm
- In the case of defects or operational faults, switch the device off immediately and disconnect the device from the mains socket. Do not pull on the mains cable or on the device to disconnect the plug from the socket. Never hold or carry the device by the mains cable. Keep the cables away from hot surfaces.
- Only use the device in dry rooms (e.g. never in the bath, sauna).
- Never reach for a device that has been submerged in water. Disconnect the mains plug immediately.
- Do not use the device if it or its accessories are visibly damaged.
- Do not drop the device or subject it to any impacts.
- Do not use the device during a storm.
- Do not clamp or pinch the mains cable.
- Ensure that the mains cable and plug do not come into contact with water, steam or other liquids.

### **Repairs**



### **WARNING**

- Only specialist personnel may perform repairs on electrical devices. Improper repairs may subject users to considerable danger. For repairs, please contact Customer Services or an authorised retailer.

### **Risk of fire**



### **WARNING**

There is a risk of fire if the device is used improperly or these instructions for use are ignored.

Therefore, never use the air humidifier

- Underneath a cover, such as blanket, pillow, etc.
- Near petrol or other highly flammable substances.

### **Risk of scalding**



### **WARNING**

When using the device with the water evaporation activated, the escaping steam is hot.

- Under no circumstances should you put your hands or face above the misting outlet nozzles during operation.
- Avoid contact with hot surfaces.
- Do not try to remove the misting outlet nozzles or the anti-lime pad during operation or for up to 15 minutes after switching off and unplugging the device. These parts may only be removed for cleaning purposes.
- As high temperatures prevail in this air humidifier, please take the appropriate safety precautions, particularly where children are present, and situate the device somewhere inaccessible to children.

## Handling



### IMPORTANT

- The device must be switched off and disconnected from the mains every time after use and before cleaning.
- The device is only intended for the purpose described in these instructions for use. The manufacturer is not liable for damage resulting from improper or careless use.
- This device is not intended for use by people (including children) with restricted physical, sensory or mental skills or a lack of experience and/or a lack of knowledge, unless they are supervised by a person who has responsibility for their safety or they receive instructions from this person on how to use the device.
- Children should be supervised around the device to ensure they do not play with it.
- Ensure that the mains cable does not pose a trip hazard.
- Do not insert any objects into openings on the device.
- Do not place any objects on the device.
- Do not expose the device to high temperatures.
- Avoid water damage by handling the device carefully (e.g. water damage from splashing in the vicinity of wooden floors).
- If the device should accidentally tip over, water may escape, even if the device is switched off and unplugged.
- The immediate vicinity of the air humidifier may become damp.
- Calcareous water can leave white deposits.
- Do not place the device on the floor, but in a raised position (e.g. on a table or chest of drawers).
- Position the device so that the mist outlet is not directed towards objects.
- Empty any remaining water when the device is not in use.
- Do not expose the device to high temperatures.

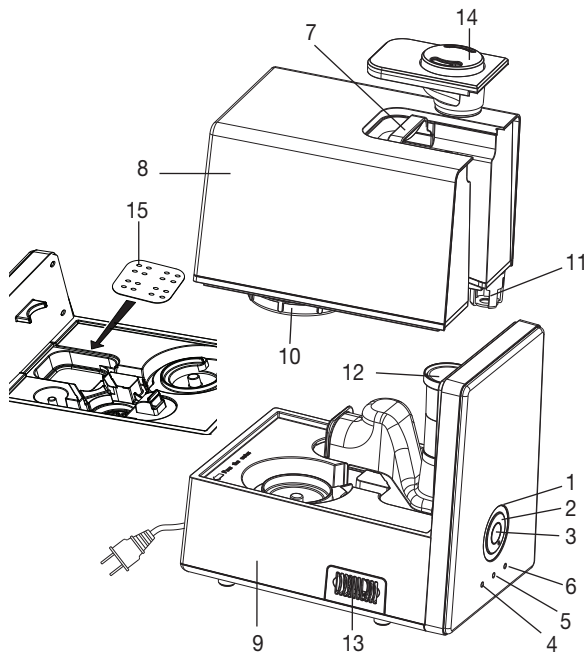
## Disposal

For environmental reasons, do not dispose of the device in the household waste at the end of its useful life. Dispose of the unit at a suitable local collection or recycling point. Dispose of the device in accordance with EC Directive – WEEE (Waste Electrical and Electronic Equipment). If you have any questions, please contact the local authorities responsible for waste disposal.



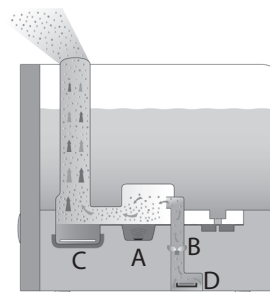
## 5. Unit description

1. Control dial
2. Illuminated operating loop for displaying the operation
3. Button for activating the water evaporation
4. LED display water evaporation level 1
5. LED display water evaporation level 2 (if 4+5, level 3 lights up)
6. Water level indicator
7. Recessed grip (when removing the mist outlet)
8. Water tank
9. Base unit for air humidifier
10. Water tank screwed plug
11. Fill level sensor
12. Air outlet
13. Aroma compartment
14. Mist outlet with two nozzles
15. Pad



## Functional layout

- A High-frequency vibrations release tiny drops from the surface of the water.
- B The fan air flow transports the humid air out into the room.
- C Water evaporation can also be switched on.
- D If you wish, the device can be used with aromas.



## 6. Initial use

- Open the cardboard packaging.
- Now remove all plastic films.
- Check the device, mains plug and cable for damage.

### Fill with water

- When filling the tank with water, disconnect the plug from the mains.
- Remove the misting outlet nozzles.
- Lift the water tank by the recessed grip and turn it upside down.
- To fill the tank, open the screwed plug underneath it.
- Now fill the tank with water. The water tank holds a maximum of six litres, and the water level is visible from the outside.
- Lock the water tank with the screwed plug.
- You may now optionally insert the anti-lime pad (15) into the evaporator pan. We recommend doing so if you live in a hard water area.
- The tank should sit tightly on the base unit.
- Check whether the misting outlet nozzle is positioned correctly on the water tank.



### IMPORTANT

- Do not add any essential oils or fragrances to the water. If other additives are used, the plastic material and the ultrasound membrane may become discoloured and damaged.
- Use fresh drinking water in the device.
- Use warm water (30°C – 45°C) and always fill the tank to the maximum level, otherwise the device could leak due to physical factors.

### Positioning the device

- Place the air humidifier on a firm, level and water-resistant surface.
- Position the air humidifier in the vicinity of a heating pad to improve evaporation output, particularly in large rooms (do not exceed a max. temperature of 50 °C). Always ensure that the air inlet and air outlet remain clear and that the air flows freely.

## 7. Operation



### IMPORTANT

Check the humidity of your ambient air regularly. Intensive continuous operation can cause the ambient air to become excessively humid. The relative air humidity should not exceed 60%.

### Switching on the device

- Insert the plug into the mains socket.
- From the min./☺ position, turn the control dial to the right. The blue illuminated operating loop lights up. If there is not enough water or no water at all in the water tank, a red LED lights up. The device has switched off for safety reasons.
- Use the control dial to set the desired evaporation output. Evaporation output is limited to a maximum of 550 ml per hour.
- When the device is switched on, the water evaporation level is already set to 1; a single blue LED shows the operation. By pushing the middle control knob (⚙), the water evaporation level increases to 2 (second blue LED lights up). By pressing it again, both LEDs turn on – level 3. (Evaporation level). The evaporation process is switched off completely when the button is pressed again (no LED on).
- Check the water level regularly during operation and refill the tank if necessary.



### Note

You may optionally add drops of aroma/scented oils to the aroma compartment (13). These will lend a pleasant odour to the room.

## 8. Cleaning and storage

Regular cleaning is a prerequisite for hygienic and fault-free operation.

The air humidifier can be dismantled easily and without tools for cleaning.

Always empty and thoroughly clean the air humidifier if the device contains water and has not been operated for longer than 3 days.

A lack of cleaning and hygiene can cause bacteria, algae and fungi to form in the water.

In any case, we recommend the following cleaning intervals.

Every three days	As required	
x		Cleaning the ultrasound membrane with a brush, rinsing the base
x		Rinsing the water tank, replacing the water
	x	Clean the air humidifier inside and out
	x	Descaling

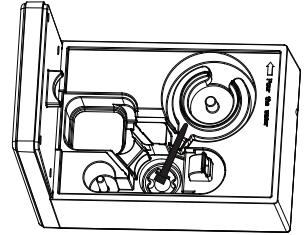
**NOTE**

- Clean the device using only the methods specified.
- Under no circumstances may liquid enter the base unit.
- Do not use any solvent-based cleaning products.
- Only use a mild flushing agent or vinegar/vinegar-based cleaner to perform cleaning or disinfection work.

**Cleaning the ultrasound membrane with a brush, rinsing the base****NOTE**

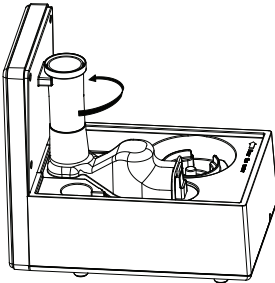
Empty the water from the base unit via the side rim.

- Clean the ultrasound membrane with the cleaning brush provided.
- Should dirty residue remain in the base unit, pour some clean, fresh water into the base unit and empty it out via the side edge.

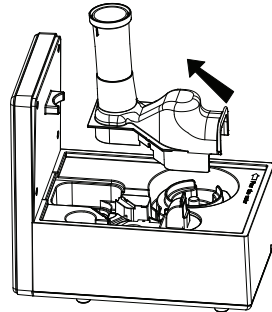
**Clean the water evaporation pan****NOTE**

- The evaporation pan is hot during operation. Allow the device to cool sufficiently before cleaning it.

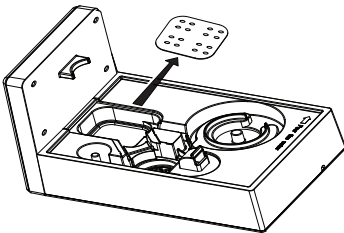
1) Hold the air outlet in one hand and turn it gently backwards.



2) Hold the air outlet firmly and remove it.

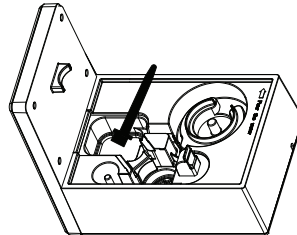


3) If necessary, remove the anti-lime pad.



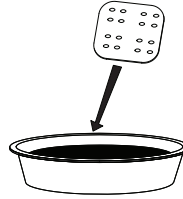
4) Clean the evaporation pan with the cleaning brush.

For heavy contamination, use a mild cleaning product, and allow it to work together with water in the pan for 10-15 minutes. Then clean again with the cleaning brush.

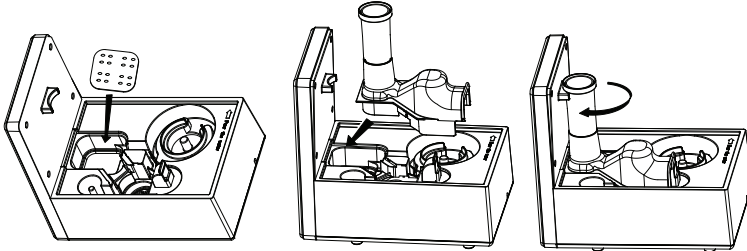


5) Should dirty residue remain in the evaporation pan, pour some clean, fresh water into the base unit and empty it out via the side edge.

6) Rinse the anti-lime pad in clear water.



7) Reinsert the anti-lime pad and position the air outlet back on the base unit.



### **Rinsing the water tank, replacing the water**

- Clean the water tank regularly, at least once a week if using daily.
- Use a mild cleaning product or vinegar/vinegar-based cleaner.
- Clean the thread of the screwed plug using the brush.
- Fill the water tank halfway with water.
- Tightly close the water tank using the screwed plug.
- Shake the water tank by rocking it back and forth several times.
- Empty out the water completely.
- Repeat the process using clean, fresh water.

### **Clean the air humidifier inside and out**

- Empty the water from the base unit via the side edge.
- Wipe the air humidifier with a damp cloth inside and out.

Only use a mild flushing agent or vinegar/vinegar-based cleaner to perform cleaning work.

### **Descaling**

#### **Descaling the ultrasound membrane**

Hard water can cause limescale to build up in the device and especially on the ultrasound membrane. This forms white deposits. Descale the device regularly.

- Drop some descaler onto the ultrasound membrane.
- Leave it to take effect for two to five minutes.
- Clean the ultrasound membrane using the cleaning brush.
- Rinse the base unit twice with clean, fresh water.

#### **Cleaning inside the base unit**

- Dip a damp, soft cloth briefly in descaling solution.
- Use the cloth to wipe the inside of the base unit.
- Carefully pour some clean, fresh water into the base unit.
- Empty the water from the base unit via the side edge.
- Repeat the process using clean, fresh water.



### Descaling the water tank

- Fill the water tank halfway with water.
- Add a small quantity of descaler.
- Tightly close the water tank using the screwed plug.
- Shake the water tank by rocking it back and forth several times.
- Empty the descaling solution completely.
- Rinse the base unit twice with clean, fresh water.

### Storage

If you do not plan to use the device for a relatively long period of time, we recommend that you thoroughly empty, clean and dry the device and store it in the original packing in a dry environment, ensuring it is not weighed down by additional items.

## 9. Replacement parts

### TIP!

If the water is hard, we recommend using the optional anti-limescale filter in addition to the anti-lime pads supplied.

### Anti-limescale filter (optional)

Order number 162.843. Please contact the national service address.



### NOTE

- If the anti-limescale filter does not prevent limescale build-up, or if white deposits form on or in the device, the anti-limescale filter should be replaced.
- The service life of the anti-limescale filter is around two to three months at most.
- If the device is not used for a relatively long time, the anti-limescale filter must be removed from the water tank and dried out.

### Fitting the anti-limescale filter


- Lift the water tank and rotate it.
- Open the screwed plug on the water tank.
- Screw the anti-limescale filter onto the screwed plug on the inside.
- Tightly seal the water tank using the screwed plug.



## 10. What if there are problems?

Problem	Cause	Solution
The operating loop does not light up.	The mains cable is not plugged in.	Connect the plug.
	The control dial is at its minimum position.	Turn the control dial clockwise towards the maximum position.
No LED display.	The mains cable is not plugged in.	Connect the plug.
	The control dial is at its minimum position.	Turn the control dial clockwise towards the maximum position.
Red LED display.	The water level is too low; the water tank is empty.	Fill the water tank.
No mist is produced.	The LED display lights up red.	Fill the water tank.
	The LED display does not light up.	Connect the plug.
The mist has a strange smell.	The device is new.	Remove the water tank, turn the screwed plug and remove it. Air the open, empty water tank in a cool, dry place for twelve hours.
	Stale or dirty water.	Empty the base unit and the water tank and clean them thoroughly. Fill the water tank with fresh water.
Strange noise.	The water tank is not positioned correctly on the base unit.	Lift up the water tank and position it correctly on the base unit. The tank should sit tightly on the base unit.
	There is too little water in the water tank.	Fill the water tank.
	The device is not level and unstable.	Place the device on a firm, level surface.
Mist escapes from underneath the water tank.	The water tank is not positioned correctly on the base unit.	Lift up the water tank. Check whether the join between the base unit and water tank is clean. Clean if required. Position the water tank correctly on the base unit. The tank should sit tightly on the base unit.

## 11. Technical data

Dimensions (L x W x H)	Approx. 29.5 cm x 19.5 cm x 28 cm
Cable length	Approx. 1.4 m
Weight when empty	Approx. 2.24 kg
Mains voltage/frequency	220-240 V AC / 50/60 Hz
Nominal power	280 W
Room size	Up to 48 m <sup>2</sup>
Maximum capacity	Approx. 6 litres
Evaporation output	550 ml/hour
Signs and symbols	 The unit is double-protected and thus corresponds to protection class 2.

## 12. Replacement items

<b>Name</b>	<b>Material</b>	<b>REF.</b>
10 anti-lime pads	Dacron	163.141
10 aroma pads.	Dacron	163.142
Beurer by Taoasis "Sleep Well" aroma oil (10 ml)		681.33